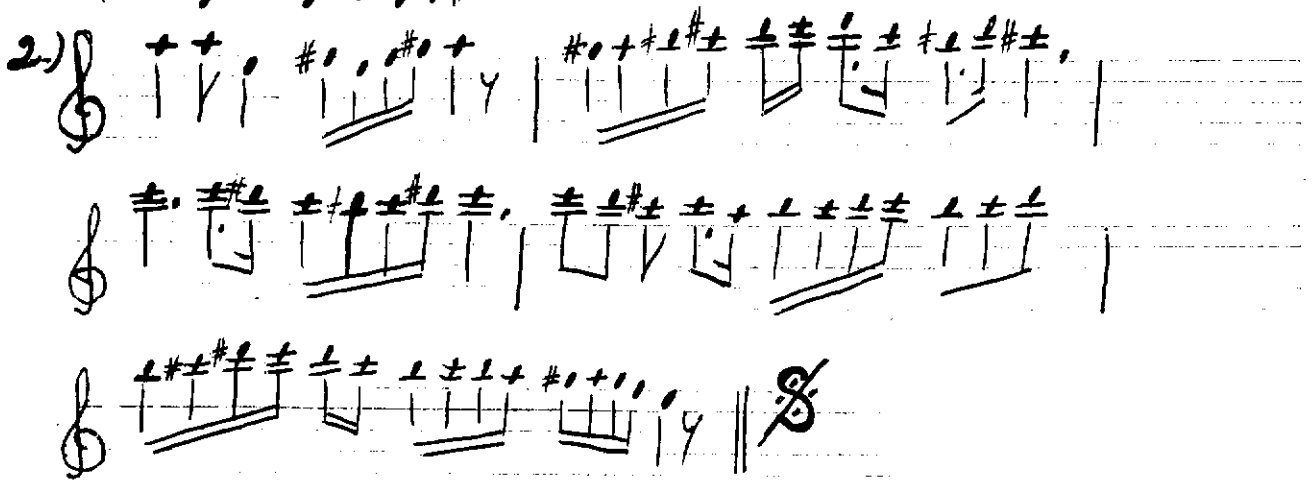
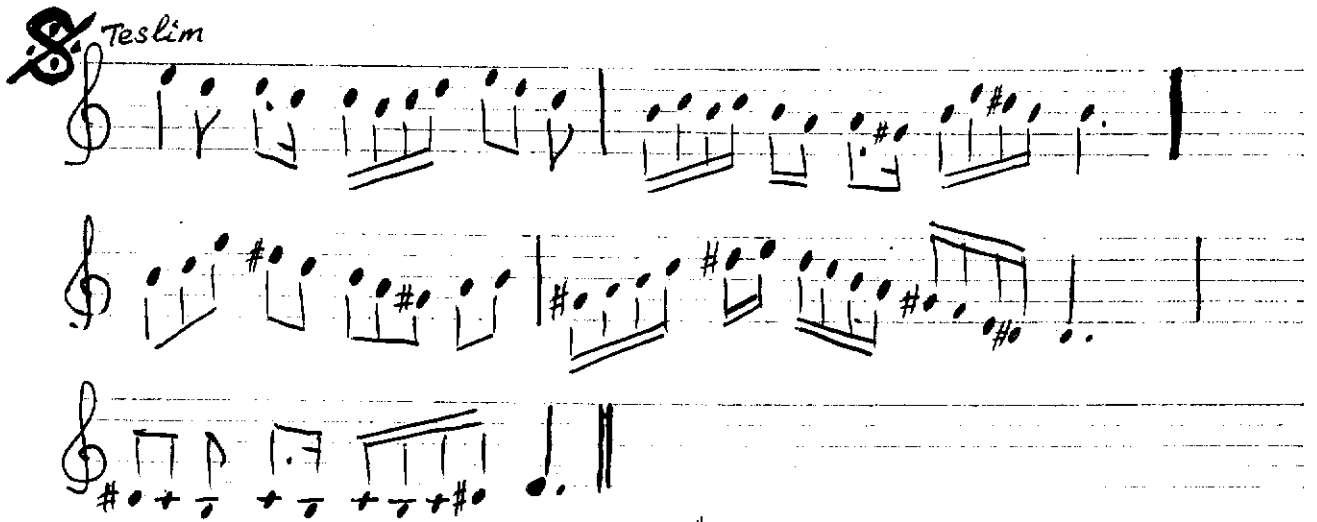
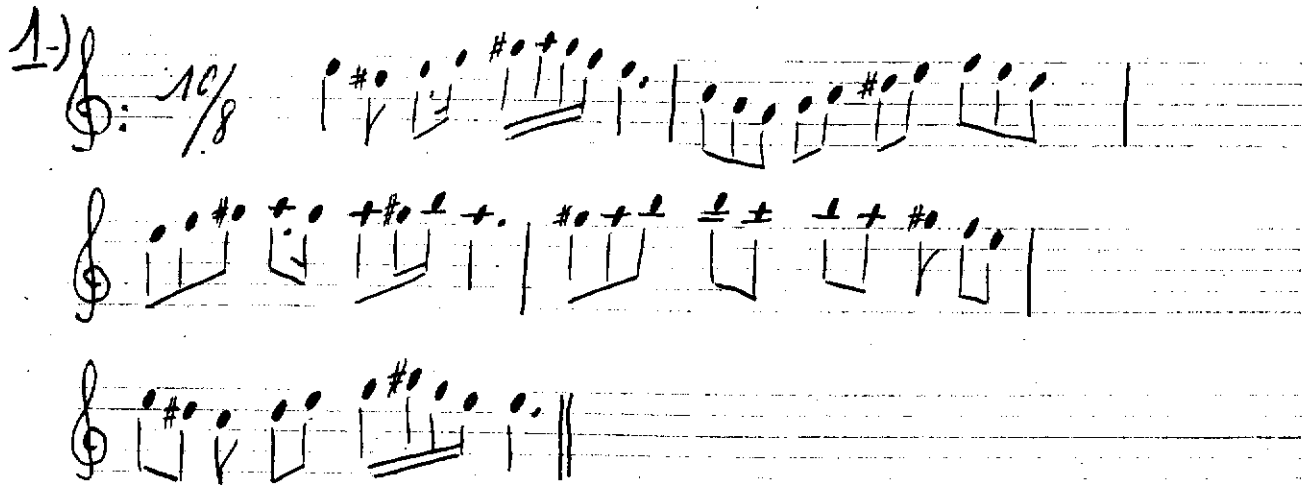


Suzidei Say Semaisi ^{S. Pinar}



3)

Handwritten musical notation for exercise 3, consisting of three staves. The first staff has a treble clef and a key signature of one sharp (F#). It contains two measures of music with eighth and sixteenth notes. The second staff continues the melody with similar note values. The third staff concludes the exercise with a double bar line and a final chord marked with a stylized 'S' or '8' symbol.

4)

Handwritten musical notation for exercise 4, consisting of five staves. The first staff has a treble clef and a time signature of 8/8. It contains two measures of music. The second staff begins with a double bar line and a key signature change to two sharps (F# and C#). It contains four measures of music with many beamed notes. The third staff continues the complex rhythmic pattern. The fourth staff continues with more beamed notes. The fifth staff concludes the exercise with a double bar line and a final chord marked with a stylized 'S' or '8' symbol.